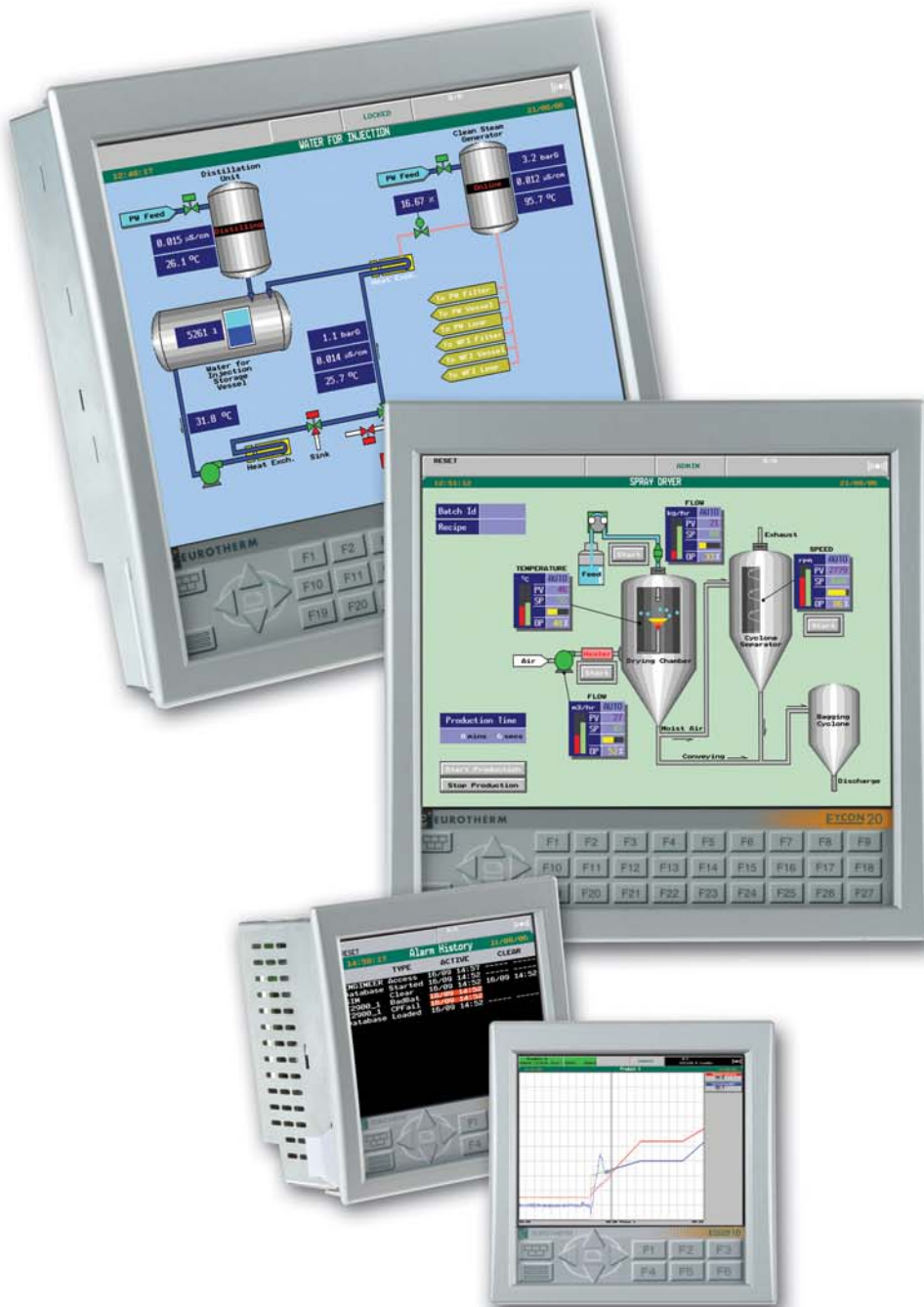


EUROTHERM® FLEXIBLE SOLUTIONS

# Eycon™ Series

VISUAL SUPERVISORS



CREATIVE VISUALISATION SOLUTIONS  
THAT PUT YOU IN CONTROL

# Power and efficiency combined

The Eycon™ Series of visual supervisors provide innovative, multi-function control, recording and visualisation – bringing Eurotherm’s expertise in control, data acquisition and process automation into a single process management unit.

## RECORD CONTROL VISUALISE AUTOMATE

### Process Management

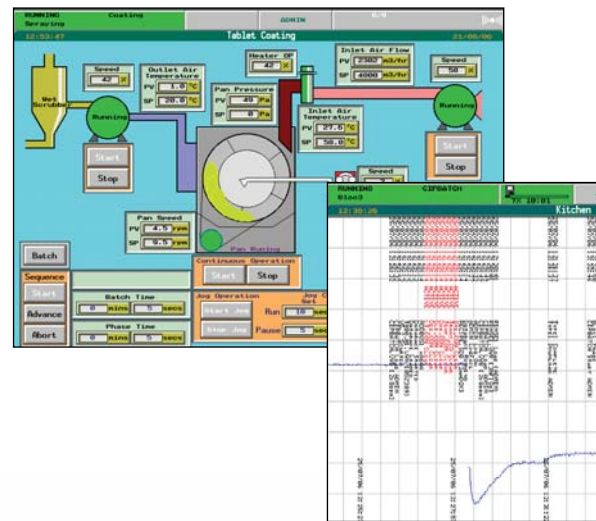
Eycon visual supervisor technology incorporates extensive functionality to provide complete management of a process. Their advanced array of features effectively makes the Eycon visual supervisor a mini DCS – with the efficiency and economy of integration into a single unit and the flexibility to be a powerful component of a wider system.



Eycon visual supervisor instruments utilised as a building block within a larger system provide peer-to-peer communications over Ethernet (ELIN) - reducing engineering costs with increased availability of the system. They are designed to reduce configuration, integration, installation and wiring costs while improving efficiency and quality with their accurate control.

The versatility of the Eycon visual supervisor units makes them ideal for a wide range of applications – as diverse as pharmaceutical / chemical reactors, glass furnaces, multi-zone heat treatment furnaces, injection moulding and extrusion systems, batch control systems, environment monitoring, building management systems and many more.

- batch control
- continuous and sequential control
- recipe management
- setpoint programming
- alarm/event management
- audit trail
- secure logins
- master comms
- data logging
- printer support



**ACCURATE CONTROL**  
*improve efficiency and quality*

**21CFR PART 11**  
*electronic records and electronic signatures*

**EASY TO USE**  
*custom displays to match your operation*

**MINI DCS**  
*complete process management*

# Easy to use, economical solutions

The Eycon-10 and Eycon-20 visual supervisors both incorporate an integrated, full colour, operator display utilising touch screen technology. A simple to use 'pop-up' navigation menu provides the user with an intuitive interface to a wide range of functionality – such as Batch Control, Recipe Management, Commissioning and Diagnostics tools and communications parameters.



**Eycon-10**

5.5" 1/4 VGA TFT touch screen display

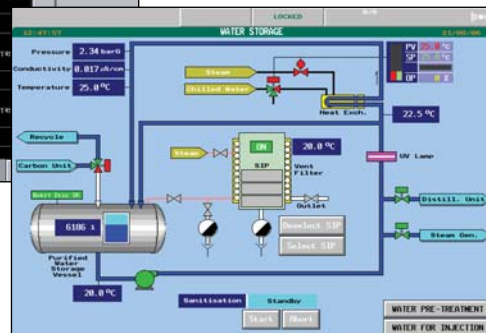
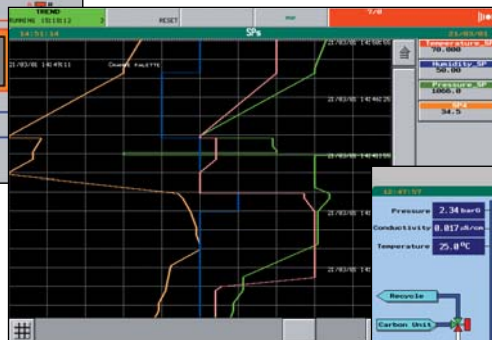
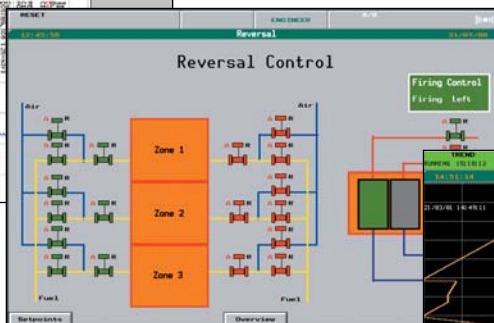
Standard displays  
99 user-defined displays  
IP65 front of panel enclosure displays  
User programmable keys



**Eycon-20**

12.1" XGA touch screen display

# VISUALISE





# A Complete Solution

The Eycon Series of visual supervisors is ideal as both a stand-alone solution and is easily integrated into a larger system. EurothermSuite software provides a single environment for visualisation, engineering and configuration across a plant wide solution incorporating multiple strategy engines and I/O solutions. Eycon visual supervisors fit perfectly with this solution as their control network provides peer-to-peer LIN communications with EurothermSuite and other control nodes. Communication with any Modbus device is also provided via serial or Ethernet connection.

## Record

Eycon visual supervisors and EurothermSuite also provide continuous, built-in data logging and trending capabilities. Online and historical trends can be viewed locally at the Eycon display or at any EurothermSuite operator station. Logged files can be archived to a removable USB memory stick or to servers on the network using File Transfer Protocol (FTP).

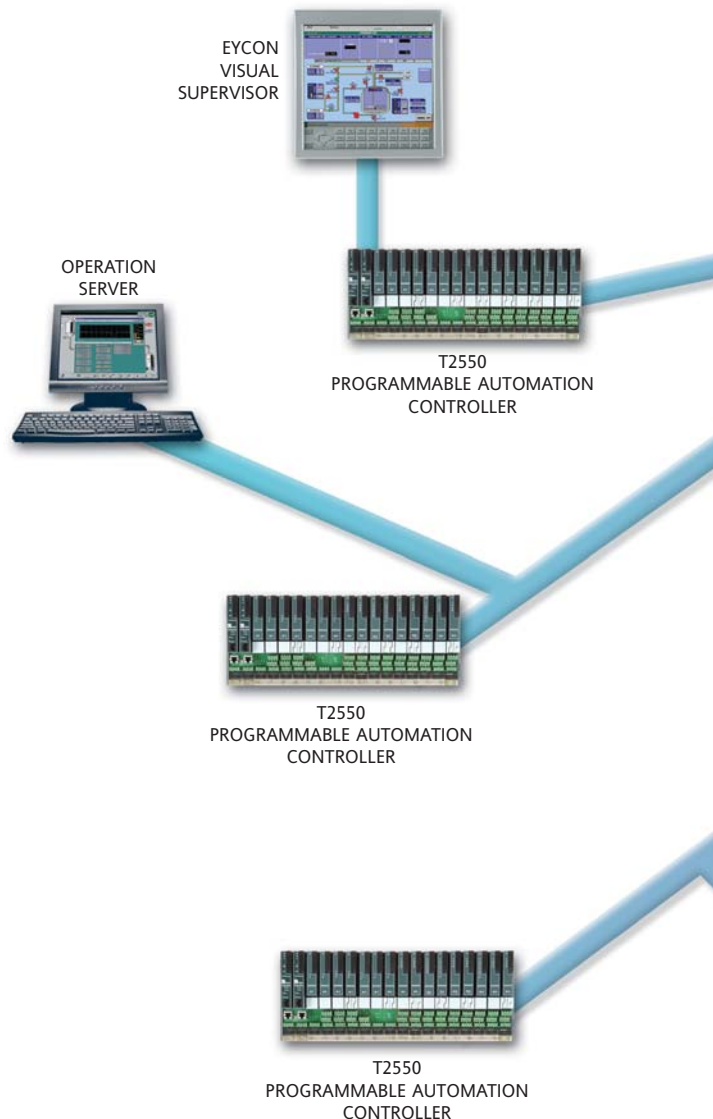
## Control and Automate

Versatile continuous control capability provides accurate, multiple PID loops and advanced process automation strategies. Eycon visual supervisor's sequential capability provides powerful sequential control and enables implementation of phases as defined by the ISA-S88 process model for the batch processes.

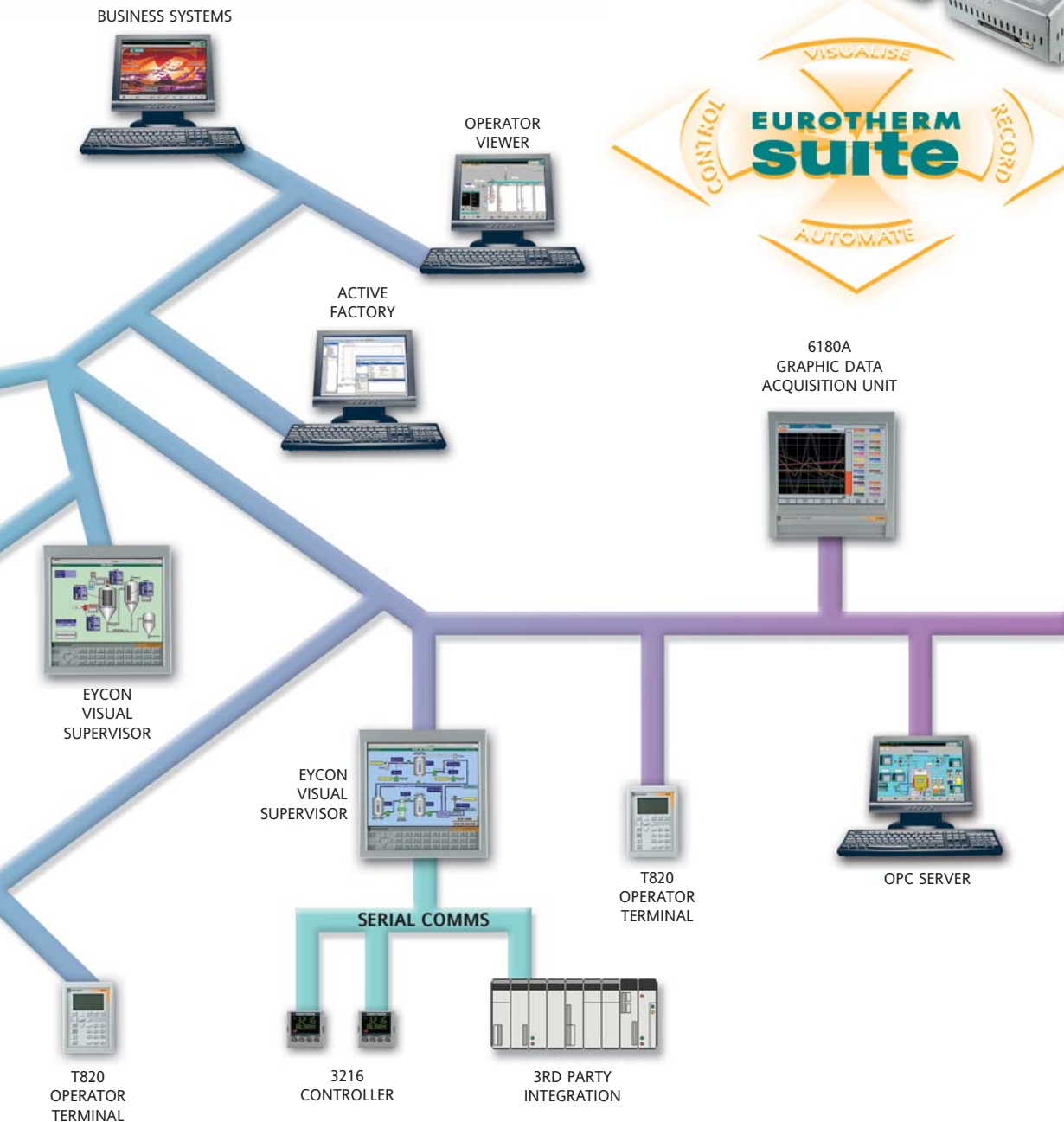
Multiple setpoint programs enable control loop setpoints to follow a predetermined series of ramp and dwell segments. Up to 8 programs with up to 16 analogue, 32 digital and a maximum of 250 segments can be run simultaneously.



Trending  
**RECORD**  
User defined display  
**VISUALISE**  
Touch screen  
**AU**  
Multiple



Data logging  
**CONTROL**  
 Multiple PID loops  
**TOMATE** DCS  
 Setpoints



# Eycon Series

Eycon visual supervisor instruments can be used either as a stand-alone system or as a building block within a larger system



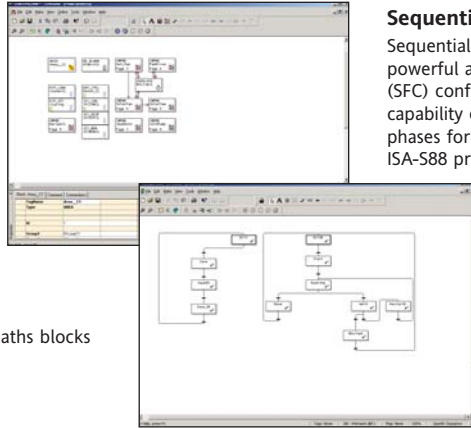
## CONTROL ENVIRONMENT

The Eycon Series of visual supervisors are capable of both continuous and sequential control. Their open network architecture allows connection to the Process Interface (T2550) I/O modules and other third party devices. Separating the processing from the I/O allows physical distribution of the modules which saves on wiring costs and panel/cubicle space).

### Continuous Control

The continuous control strategy is built by interconnecting function blocks selected from an extensive library.

- Alarm and Event logging/printing with date and time stamp
- Easy to use block structured programming
- Function blocks library includes control, timing, logic and maths blocks
- ISA-S88 based control modules representing physical plant equipment such as valves, pumps
- User configurable function



### Sequential Control

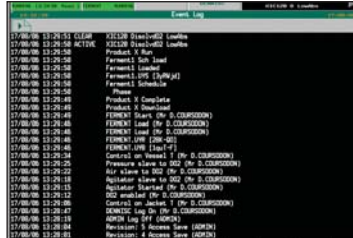
Sequential strategies are built using the powerful and intuitive Sequential Flow Chart (SFC) configurator. The sequential control capability enables the configuration of phases for batch process as defined by the ISA-S88 process model.

- Ideal for configuration of phases for a batch process
- Multiple sequences running simultaneously
- Sequences can be loaded and unloaded as required by process
- Easy to use Sequential Flow Chart programming

## ALARM AND EVENT MANAGEMENT

Eycon visual supervisor instruments provide alarm and event management for additional security and traceability of the process. Time stamps all alarms and event messages and provides a comprehensive audit trail as required by 21 CFR Part 11. For alarms, the alarm history log displays the “activated”, “acknowledged”, and “de-activated” times in a single line.

- Alarm and event logging/printing with date and time stamp
- Standard Historical and summary displays
- Tamperproof audit trail
- Single or multiple alarm acknowledge
- Ability to add notes to the alarm history log
- Option of including alarm and events in the log/batch logs
- Archive on demand



## MULTI-SETPOINT PROGRAM

The Setpoint Programmer enables the operator to select and run a required Setpoint Program from a list. With the Preview facility, the operator can view the Program before running it. Once the program is running, the Setpoint and achieved process values are plotted on the screen as trends.

- Up to 16 analogue Setpoint Profiles, 32 Digital output Profiles and 250 segments on a single time base
- Up to 8 Setpoint Programs running simultaneously
- Stores over 200 Setpoint Programs
- Comprehensive control: Run, Run from, Hold, Skip, abort, Schedule, etc.
- On-line graphical monitoring
- Local and remote editor
- Load Setpoint Program via USB memory stick



## RECIPE MANAGEMENT

The Eycon visual supervisor provides advanced and flexible recipe management. This powerful feature is easy and efficient for the operator to use. Automatic version control gives added peace of mind that the correct recipe is being downloaded. Recipes can be created, maintained and downloaded from the front panel. The order of execution of a recipe is the order of the values in the file in a top-down manner.

- On-line and off-line recipe editor
- Up to 500 parameters per recipe
- Automatic version control
- Ability to store multiple recipes, with download and capture facilities
- Advance recipe monitor with diagnostic information
- Optional multiple recipes in a single file, easy to maintain

Recipe No	SP	SP(Low)
Profile	Parameter 1	Parameter 1
Ag1 Slave In	0.0	0.000
Ag1 Slave Out	60.0	60.000
Ag1 Start	70.0	70.0
Ag1 St	70.0	70.0
Profile Ag1	30.0	30.000
Ag1 Slave In	70.0	70.000
Ag1 Slave Out	60.0	60.000
Profile Flag	70.0	70.000
Temp in Rem	70.0	70.000
Ag1 on Rem	70.0	70.000

## BATCH CONTROL

Batch Manager enables an operator to control (i.e. load, start, hold, restart, abort) a batch, and monitor its progress from standard displays. Each batch is identified by either a unique number (automatically generated) or a batch ID entered by the operator.

- Configure a batch from Set-up page
  - Unique custom/automatic Batch id
  - Recipe selection
  - Six operator entry fields such as customer name, product type
- Comprehensive batch control including Start, Hold, Abort, Restart, Reset, etc.
- Automatic recipe download
- Automatic batch log and report generation



## PRINTER SUPPORT

An application running on an Eycon Visual Supervisor can be configured to:

- Send alarm and event messages to the printer
- Send report files to the printer
- Support special control sequences for formatting the printed alarm and event messages
- Can be connected to any serial printer that supports ASCII code



## REPORTS

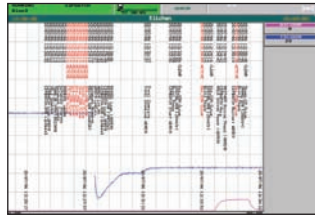
This feature allows Reports to be created and sent to the printer or log files on demand.

- Triggered/controlled from the strategy
- Configured using a "form" file
- Support for multiple reports
- Support for fixed text

## TRENDING AND DATA LOGGING

The Eycon visual supervisor provides trending of analogue and digital values with data logging to historical files. Historical data can be stored in a secure, encrypted format or ASCII to best suit the application.

- Multiple log groups
- Batch, hourly, daily or on demand logging
- Multiple, simultaneous recording rates for different log groups
- Logged data files stored on the internal flash memory or archived to USB memory stick or FTP server
- Standard displays include horizontal and vertical trends, bar graphs and numerical data representation
- Log files can contain reports, alarms, events and operator messages
- Up to 3 remote file servers can be configured for added security of data
- On-line trending
- Local historical trending
- Trends can be incorporated into user-defined displays
- Audit trail information can be displayed on the trends



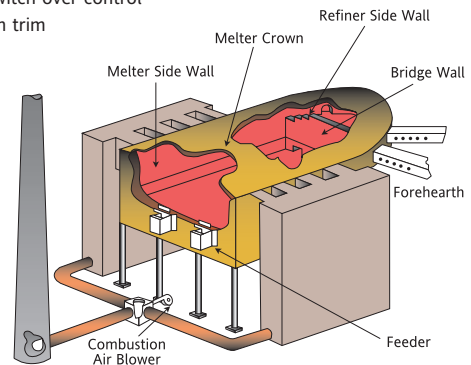
## GLASS SOLUTIONS

Glass manufacture requires a high level of accuracy and reliability in the control to achieve consistent glass quality. The Eycon visual supervisor combined with the T2550 PAC provides an excellent solution for glass production lines. The multi-zone capability, control accuracy and easy monitoring of the process are ideal for areas such as furnaces and lehrs that require accurate and consistent control throughout several zones.



### Glass Furnaces

- Local visualisation
- World renowned accuracy of control
- Continuous, precise glass level control
- Cross-limiting lead/lag combustion control
- Redundant processors in T2550 PAC provide high availability where required
- Fuel flow/ratio control
- Fuel switch over control
- Oxygen trim



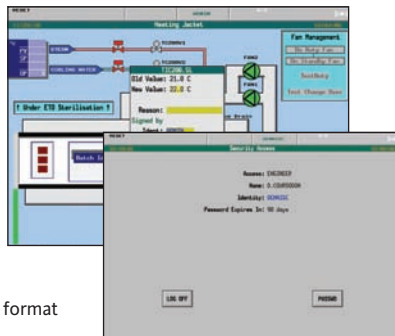
## LIFE SCIENCES

### 21 CFR Part 11 Validatable

Auditor features on the Eycon visual supervisor have been specifically designed to meet the requirements of the FDA 21 CFR Part 11 regulation for Electronic Recorders and Electronic Signatures. Tamper proof Electronic data can be viewed, analysed and printed off-line using the secure Review package.

### Secure Electronic Records

- Process Values and Audit Trails (Alarms, Events, Electronic Signature)
- Data and Time stamped
- Time Synchronisation
- Viewable in human readable format



### Electronic Signature

- User actions with signing and authorisation
- Unique signatures required
- Automatic Log-off
- Minimum length password
- Access control according to authority level
- Automatic password expiry



### Security/Authorisation

The Visual Supervisor offers a comprehensive security, which controls access to various features and to individual parameters on the mimics as required by 21CFR11 Part 11.

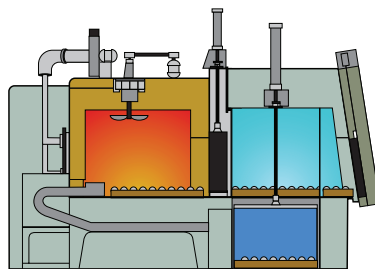
- Controlled Access
- Each user with a unique ID and password
- Offers five level of access: Admin, Engineer, Commission Engineer, Operator and Locked
- Electronic signature with "Reason" and "Authorisation"

## HEAT TREATMENT

The integration of control and data logging combined with batch, recipe and setpoint programming makes the Eycon visual supervisor ideal for many heat treatment applications. Eurotherm has vast experience in providing heat treatments solutions in both regulated and non-regulated applications. The Eycon visual supervisor, combined with Eurotherm's expertise, could help you to increase productivity and lower costs.

### Gas Carburising of Steel

Surface hardening of steels by the chemical diffusion of carbon into the surface layer of a component requires the precise control of temperature, furnace atmosphere and time.

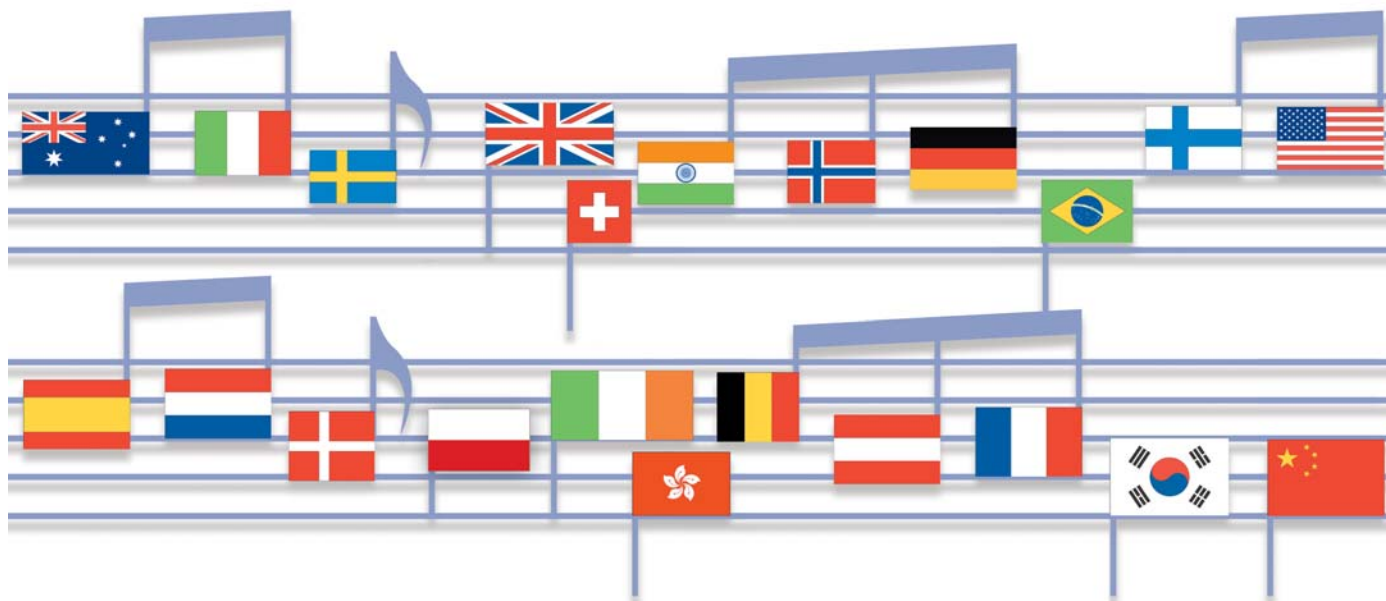


- Furnace sequencing
- Product transfer
- Data management
- Furnace diagnostics
- Recipe management
- Three gas IR
- Endo generator control
- Temperature programming and control
- Carbon potential and diffusion control
- Power/gas control
- Atmosphere probes and gas sequencing
- Quench sequence control
- Quench recipes
- Quench oil control



# Eurotherm: International sales and service

Understanding and providing local support is a key part of Eurotherm's business. Complementing worldwide Eurotherm offices are a whole range of partners and a comprehensive technical support team... to ensure you get a service you will want to go back to.



**AUSTRALIA** Sydney  
Eurotherm Pty. Ltd.  
T (+61 2) 9838 0099  
F (+61 2) 9838 9288  
E [info.au@eurotherm.com](mailto:info.au@eurotherm.com)

**AUSTRIA** Vienna  
Eurotherm GmbH  
T (+43 1) 7987601  
F (+43 1) 7987605  
E [info.at@eurotherm.com](mailto:info.at@eurotherm.com)

**BELGIUM & LUXEMBOURG** Moha  
Eurotherm S.A./N.V.  
T (+32) 85 274080  
F (+32) 85 274081  
E [info.be@eurotherm.com](mailto:info.be@eurotherm.com)

**BRAZIL** Campinas-SP  
Eurotherm Ltda.  
T (+5519) 3707 5333  
F (+5519) 3707 5345  
E [info.br@eurotherm.com](mailto:info.br@eurotherm.com)

**DENMARK** Copenhagen  
Eurotherm Danmark AS  
T (+45 70) 234670  
F (+45 70) 234660  
E [info.dk@eurotherm.com](mailto:info.dk@eurotherm.com)

**FINLAND** Abo  
Eurotherm Finland  
T (+358) 22506030  
F (+358) 22503201  
E [info.fi@eurotherm.com](mailto:info.fi@eurotherm.com)

**FRANCE** Lyon  
Eurotherm Automation SA  
T (+33 478) 664500  
F (+33 478) 352490  
E [info.fr@eurotherm.com](mailto:info.fr@eurotherm.com)

**GERMANY** Limburg  
Eurotherm Deutschland GmbH  
T (+49 6431) 2980  
F (+49 6431) 298119  
E [info.de@eurotherm.com](mailto:info.de@eurotherm.com)

**HONG KONG & CHINA**  
Eurotherm Limited North Point  
T (+85 2) 28733826  
F (+85 2) 28700148  
E [info.hk@eurotherm.com](mailto:info.hk@eurotherm.com)

**Guangzhou Office**  
T (+86 20) 8755 5099  
F (+86 20) 8755 5831  
E [info.cn@eurotherm.com](mailto:info.cn@eurotherm.com)

**Beijing Office**  
T (+86 10) 6567 8506  
F (+86 10) 6567 8509  
E [info.cn@eurotherm.com](mailto:info.cn@eurotherm.com)

**Shanghai Office**  
T (+86 21) 6145 1188  
F (+86 21) 6145 1187  
E [info.cn@eurotherm.com](mailto:info.cn@eurotherm.com)

**INDIA** Chennai  
Eurotherm India Limited  
T (+91 44) 24961129  
F (+91 44) 24961831  
E [info.in@eurotherm.com](mailto:info.in@eurotherm.com)

**IRELAND** Dublin  
Eurotherm Ireland Limited  
T (+353 1) 4691800  
F (+353 1) 4691300  
E [info.ie@eurotherm.com](mailto:info.ie@eurotherm.com)

**ITALY** Como  
Eurotherm S.r.l.  
T (+39 31) 975111  
F (+39 31) 977512  
E [info.it@eurotherm.com](mailto:info.it@eurotherm.com)

**KOREA** Seoul  
Eurotherm Korea Limited  
T (+82 31) 2738507  
F (+82 31) 2738508  
E [info.kr@eurotherm.com](mailto:info.kr@eurotherm.com)

**NETHERLANDS** Alphen a/d Rijn  
Eurotherm B.V.  
T (+31 172) 411752  
F (+31 172) 417260  
E [info.nl@eurotherm.com](mailto:info.nl@eurotherm.com)

**NORWAY** Oslo  
Eurotherm A/S  
T (+47 67) 592170  
F (+47 67) 118301  
E [info.no@eurotherm.com](mailto:info.no@eurotherm.com)

**POLAND** Katowice  
Invensys Eurotherm Sp z o.o.  
T (+48 32) 2185100  
F (+48 32) 2177171  
E [info.pl@eurotherm.com](mailto:info.pl@eurotherm.com)

**SPAIN** Madrid  
Eurotherm España SA  
T (+34 91) 6616001  
F (+34 91) 6619093  
E [info.es@eurotherm.com](mailto:info.es@eurotherm.com)

**SWEDEN** Malmo  
Eurotherm AB  
T (+46 40) 384500  
F (+46 40) 384545  
E [info.se@eurotherm.com](mailto:info.se@eurotherm.com)

**SWITZERLAND** Wollerau  
Eurotherm Produkte (Schweiz) AG  
T (+41 44) 7871040  
F (+41 44) 7871044  
E [info.ch@eurotherm.com](mailto:info.ch@eurotherm.com)

**UNITED KINGDOM** Worthing  
Eurotherm Limited  
T (+44 1903) 268500  
F (+44 1903) 265982  
E [info.uk@eurotherm.com](mailto:info.uk@eurotherm.com)  
[www.eurotherm.co.uk](http://www.eurotherm.co.uk)

**U.S.A.** Leesburg VA  
Eurotherm Inc.  
T (+1 703) 443 0000  
F (+1 703) 669 1300  
E [info.us@eurotherm.com](mailto:info.us@eurotherm.com)  
[www.eurotherm.com](http://www.eurotherm.com)

Eurotherm is also represented in the following countries:

Algeria  
Azerbaijan  
Bahrain  
Bangladesh  
Benin  
Bosnia and Herzegovina  
Bulgaria  
Burkina Faso  
Cameroon  
Canada  
Czech Republic  
Egypt  
Georgia  
Greece  
Guinea-Conakry  
Hungary  
Indonesia  
Iran  
Iraq  
Israel  
Ivory Coast  
Japan  
Jordan  
Kazakhstan  
Kenya  
Kuwait  
Latvia  
Lithuania

Malaysia  
Mali  
Mexico  
New Zealand  
Niger  
Nigeria  
Oman  
Pakistan  
Philippines  
Puerto Rico  
Qatar  
Romania  
Russia  
Saudi Arabia  
Serbia and Montenegro  
Singapore  
Slovak Republic  
Slovenia  
South Africa  
Sri Lanka  
Thailand  
Togo  
Tunisia  
Turkey  
Turkmenistan  
UAE  
Ukraine  
Uzbekistan

ED53

Represented by:

© Copyright Eurotherm Limited 2007

Invensys, Eurotherm, the Eurotherm logo, Chessell, EurothermSuite, Mini8, Eycon, Eyris and Wonderware are trademarks of Invensys plc, its subsidiaries and affiliates. All other brands may be trademarks of their respective owners.

All rights are strictly reserved. No part of this document may be reproduced, modified, or transmitted in any form by any means, nor may it be stored in a retrieval system other than for the purpose to act as an aid in operating the equipment to which the document relates, without the prior written permission of Eurotherm limited.

Eurotherm Limited pursues a policy of continuous development and product improvement. The specifications in this document may therefore be changed without notice. The information in this document is given in good faith, but is intended for guidance only.

Eurotherm Limited will accept no responsibility for any losses arising from errors in this document.

Part No. HA029401 Issue 2



Printed on recycled paper in England 03.07